



50 YEARS 1974-2024

CMSlandscaping.com

CMS Curb Appeal

A more personal approach to lawncare

Round 1, 2025
413-533-3300



TURF TIPS!

Remember, your first application has pre-emergent crabgrass control in it and it needs to be watered in within 3-4 days – (either rain or sprinkler).

When mowing your lawn, raise the blades to the highest or next to the highest setting.

It's **ALWAYS** best to leave the clippings when mowing, but **DEFINITELY** for the first 2 cuts after an application.



FROM THE TOP

Every St Patrick's day weekend is full of excitement, and with the beautiful weather for Road Race Day we had a fantastic day hosting our Annual Road Race party with a great turnout!

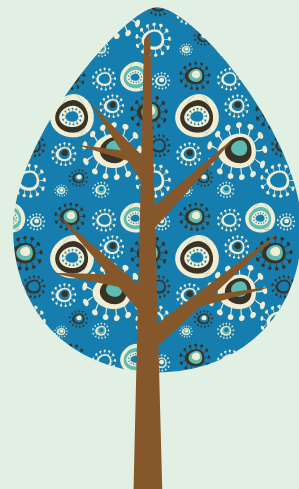
The excitement from Parade weekend always carries over into our Season Kickoff as we are hustling and bustling to make last minute preparations and transitioning out of our Snow Services (WE HOPE!)

With a few warm days in March and hopefully many to follow in April the Spring rush will be on. While we want to get right out there after being cooped up all winter and get right into the season, mother nature has its own schedule, and environmentally even different parts of your own property will "awaken" at different times. We will be applying our first-round applications throughout the month of April.

Everyone here at CMS appreciates the trust you place in us to help with your lawn and landscapes. We will continue to strive to provide value to the community in all we do. If you couldn't make it to our Road Race event, be sure to join us for upcoming Earth Day shred event. We invite all our customers down on Earth Day, April 22nd 9-11 am to shred your personal/confidential papers. Be on the lookout as we are hosting events and discounts all the time.

Introducing Ryan Mange

Ryan joins us as our Lawn and Tree and Shrub Manager. He is a graduate of UMASS with a degree in Urban Forestry and has spent 20 years working in the green industry. He is an ISA Certified arborist and has worked as a consultant and coach for the largest tree service company in the country. He is married with 2 children, 6 years and 8 months, a black lab named Raven and a feisty tuxedo cat named Charlie. He and his wife have a small homestead where they have an extensive garden, some chickens and they raise bees. His free time is spent with family and friends, enjoying live music events, and checking out new restaurants. Welcome aboard Ryan!





FROM ELAINE'S CORNER OF THE WORLD

Hard to believe this is the start of our 51st season and my 22nd with the company, and what a true pleasure it is. They say that if you love your job then you'll never work a day in your life and I have found that to be true. I have only had 4 jobs in my life but only CMS has had my heart. 😊

Spring has arrived and for me not a moment too soon. I love seeing the animals (deer, turkeys, woodchuck and fox) that come and bring their babies to visit our yard, and the sight and sound of the birds that hang out at our feeders and build their nests in our bushes each year. For Christmas our daughter and son in law gave us a Bird Fy bird feeder that has a camera and microphone in it!!! How cool is that! We are notified on our phone when we have a visitor to the feeder and we can hear them and watch them live. Of course, if it's an unwanted squirrel that's visiting, we can use the microphone to scare them away. LOL We have had such fun with it!

No big plans this summer other than a few short trips, entertaining company, and some garden stuff. I think Hydroponics is in the plan this year along with container veggies and herbs. No more chickens for us as we lost our whole flock in one night last fall to a weasel which was devastating. Fortunately, we have several friends who have chickens and can keep us supplied with fresh farm eggs. Have a joyful spring and enjoy the warmer weather.

PLANT HEALTH CARE

We have elevated our Plant Health Care Program and are on the leading edge of landscape care in this area. We have several solutions for common problems that plague our landscapes right here in the Pioneer Valley. From tree injection solutions for Emerald Ash Borer, Dutch Elm Disease, and Beech Leaf Disease to specialty treatments for Spotted Lantern Fly and Hemlock Woolly Adelgid, we have the tools to help you save your valuable trees from destructive pests. Call the office to schedule your free on-site assessment by our certified arborist to scout for signs and symptoms and elevate the health of your personal landscape trees and plants.

MARK YOUR CALENDARS

Community Shred Day – CMS invites you to come down to the office on Earth Day, Tuesday, April 22nd from 9-11 and bring your personal and confidential papers to be destroyed in a safe and secure manner. Please remove binder and paper clips, but you don't have to worry about staples. This is a FREE service for our customers and our local community so come on down!!!



SILVERPLUS

Silver Plus Club 25 Years

We are pleased to welcome Mary Robinson of Southampton and Oakdale Dental of Holyoke to the Silver Plus Club. We have had the pleasure of servicing their properties for 25 years or more. The most exciting part for us, is that the club membership list keeps growing. Thank you so much for trusting us with your landscape year after year. We really appreciate it.



Don't forget to check us out on Facebook!
www.facebook.com/cmslandscaping

413-533-3300

CMS Landscaping Corporation
175 Suffolk Street
Holyoke, MA 01040
CMSlandscaping.com